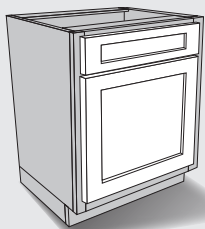


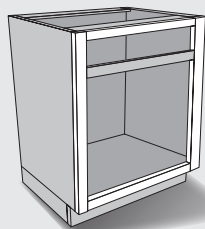
Refacing Ordering Guidelines

You have these conditions:

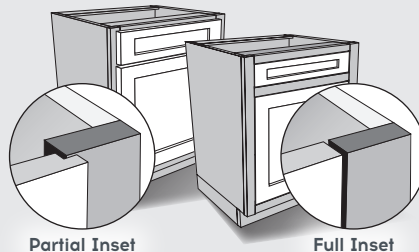
Existing Doors



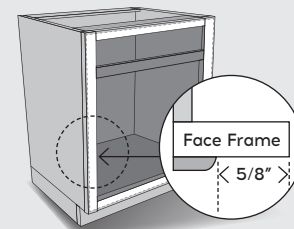
Framed Cabinet



Doors are Partially or Fully Inset into Cabinet Opening



Minimum 5/8" Clearance On All Sides of Opening

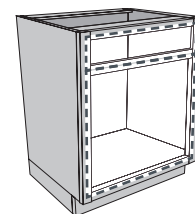


NOTE 1: We only offer overlay doors. Your new doors will overlap the cabinet frames by 1/2" (0.5"). If you have any cabinets with less than 5/8" (0.625") frame clearance, please call for assistance.



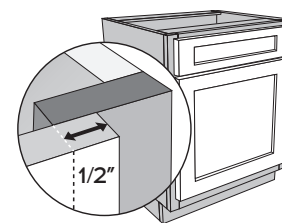
Determine your door & drawer front sizes:

1. Download our helpful form to record your information the same way our website will ask for it. [Measurement Form](#)
2. Measure your cabinet openings to the closest 1/16" (0.0625"). Measure width first, then height.
 - Add 1" to the cabinet opening width and height to determine your new dimensions..



Your new doors will overlap the cabinet frames by 1/2" (0.5").

Write the dimensions and quantities you need on the measurement form.



3. Double check that you haven't missed a part. The number of parts on the form should match the number of doors and drawers you need.



What to order:

1. Order 1/2" overlay hinges.
2. Order doors and drawer fronts with the dimensions determined above.