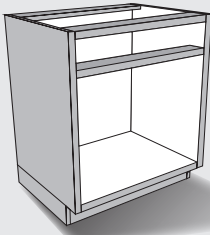


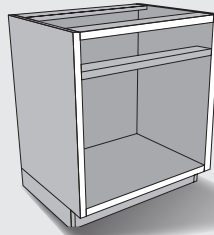
# Refacing Ordering Guidelines

You have these conditions:

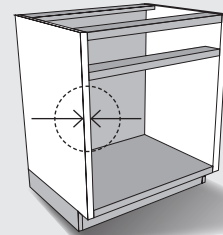
## No Existing Doors



## Frameless Cabinets



## End Panel 3/4" Thick



## Determine your door & drawer front sizes:

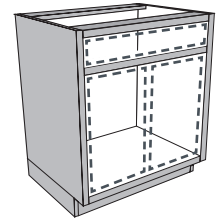
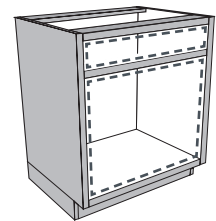
1. Download our helpful form to record your information the same way our website will ask for it. [Measurement Form](#)
2. Measure your cabinet opening to the closest 1/16" (0.0625"). Measure width first, then height.

### For openings less than 22" wide, order 1 door.

- Add 1-3/8" (1.375") to the cabinet opening width and to the opening height.

### For door openings greater than 22" wide, order 2 doors.

- Add 1-1/4" (1.25") to cabinet opening width, then divide by 2 to determine the door width.
- Add 1-3/8" (1.375") to the opening height to get the door height.



Write the dimensions and quantities you need on the measurement form.

3. Double check that you haven't missed a part. The number of parts on the form should match the number of doors and drawers you need.



## What to order:

1. When asked, choose 3/4" end panel thickness so you get the right hinges.
2. Order doors and drawer fronts with the dimensions determined above.